



# THE BULLETIN

**BRITISH COLUMBIA COUNCIL OF GARDEN CLUBS**

**FEBRUARY 2021**

# PRESIDENT'S MESSAGE

(PLEASE FORWARD THIS NEWSLETTER TO ALL YOUR CLUB MEMBERS – THANK YOU!)

**BY CINDY TATARYN**

**FIRST VICE-PRESIDENT**

FOR ERIC HEES, PRESIDENT

## LIAISON PERSON:

On the Affiliation Form we have asked for contact information for a Liaison person for each club. BCCGC has over 185 clubs with over 10,000 members province wide. There is no way that the BCCGC Executive can pass along our communications to all of these members ourselves. We rely on the Liaison person of each club to forward all our communications on to your club members with email addresses.

Your club Liaison person needs to be someone who has all your club members' email addresses with the ability and willingness to forward our communications (such as our BCCGC newsletter and e-bulletins, etc.). They also need to know that they have been designated as your club Liaison person!

The reason I'm bringing this up is that I wasn't receiving my copy of the BCCGC newsletter from all the clubs that I belong to. I belong to several clubs or associations that are members of BCCGC and I only received the newsletter from two of those clubs. If I'm not receiving my copy of the BCCGC newsletter that means there are literally hundreds of gardeners out there are also not receiving their copy of the BCCGC newsletter from their club Liaison person.

In December I wrote an article in the newsletter asking for volunteers to help the BCCGC Executive with specific

tasks. I haven't received any emails replying to my request. In January I wrote another article in the newsletter asking for volunteers to put their names forward for positions on the BCCGC Executive at the upcoming AGM elections. Again, I haven't received any emails replying to that request either!

So, now I'm wondering. Did your club members even receive a copy of these newsletters? Out of 10,000 gardeners I should have heard something from someone. I feel like my requests are being lost in a giant void.

As members of a club, the membership dues go toward paying the BCCGC affiliation fees. That means that if they have an email address they should be receiving a copy of BCCGC communications, BCCGC newsletter and BCCGC e-bulletins. That is where the Liaison person comes in.

**Please help us help you by sharing the BCCGC communications with your club members! 😊**

1. The Liaison person needs to know that they are the Liaison person for your club.
2. The Liaison person needs an up-to-date list of the email addresses for all the members of your club.
3. The Liaison person needs to be willing and able to forward BCCGC communications to your club members.

## HELP STILL NEEDED!

I'm looking for several committee members to help with specific tasks. You've heard the old adage "Many hands make light work!" In order to lighten the load for everyone I'm looking for several people who can help the BCCGC Executive with the following tasks:

1. **Mailchimp** – If you know how to use Mailchimp and have a couple hours a month to help distribute *The Bulletin*, e-bulletins and any other BCCGC communications to the Liaison person of member clubs, we could use your help. We have other committee members who will be writing the communications. We just need someone who will do the actual distributing.
2. **SurveyMonkey** – Twice a year we send out SurveyMonkey in conjunction with our spring AGM and fall General Meeting to conduct votes on BCCGC issues. If you know how to use SurveyMonkey, make questions (as directed by the Executive), distribute the survey to the member clubs and report the results back to the Executive we need your help.
3. **Eventbrite** – We use Eventbrite to register for our spring AGM and fall General Meeting. If you know how to use Eventbrite and have a few hours to spare prior to our AGM and GM we could use your help with this.
4. **Wordpress** – I know this is a Big Ask but we need someone who is familiar with Wordpress and can update our website when needed. The Executive will give directions a few times a year of what updates are needed.

If you have any of these skills and have a few hours to spare to help us out it would be greatly appreciated! Please contact me, Cindy Tataryn at 604-585-6786 or email

[1vicepresident@bcgardenclubs.com](mailto:1vicepresident@bcgardenclubs.com).

### Save the Date:

Our Annual General Meeting will be held on **March 27, 2021, via Zoom from 9:00 AM to 12:00 Noon.**

The positions up for election are:

**President**, <https://bcgardenclubs.com/about/exec-board/president-terms-of-reference/>

**2nd Vice President**, <https://bcgardenclubs.com/about/exec-board/second-vice-president-terms-of-reference/>

**Secretary**, <https://bcgardenclubs.com/about/exec-board/secretary-terms-of-reference/>

**Scholarship Trust Fund Trustee** (3 years), <https://bcgardenclubs.com/about/exec-board/scholarship-trust-committee-terms-of-reference/>

If you are interested in any of these positions or want to nominate someone else, please contact 1st Vice President Cindy Tataryn at 604-585-6786 or email [1vicepresident@bcgardenclubs.com](mailto:1vicepresident@bcgardenclubs.com) or contact Past President Lorna Fraser at [pastpresident@bcgardenclubs.com](mailto:pastpresident@bcgardenclubs.com).

Happy Gardening!

Cheers!

Cindy Tataryn

First Vice President, BCCGC

[1vicepresident@bcgardenclubs.com](mailto:1vicepresident@bcgardenclubs.com)

# NATIVES IN OUR GARDENS

## Importance of Choosing Native Plants for Your Region

By Sabine Almstrom, Cowichan Valley Garden Club, Jubilee Garden Club, Duncan

A few days ago I read the [December 2020 Bulletin](#) and was thrilled to see your article on increasing native plants in our gardens. I have promoted this concept for several years in Duncan, BC, where I live.

Recently a friend asked me if there is a native milkweed here on Vancouver Island because she wanted to help supply these host plants of monarch butterflies. I had looked into this question a few years ago while transforming my own garden into native habitat and was eager to help the monarchs on their migration.

What I found, and had to tell my friend, was that there is no native milkweed on Vancouver Island, and the monarchs do not visit the Island during their migration, except for very rare ones blown off course.

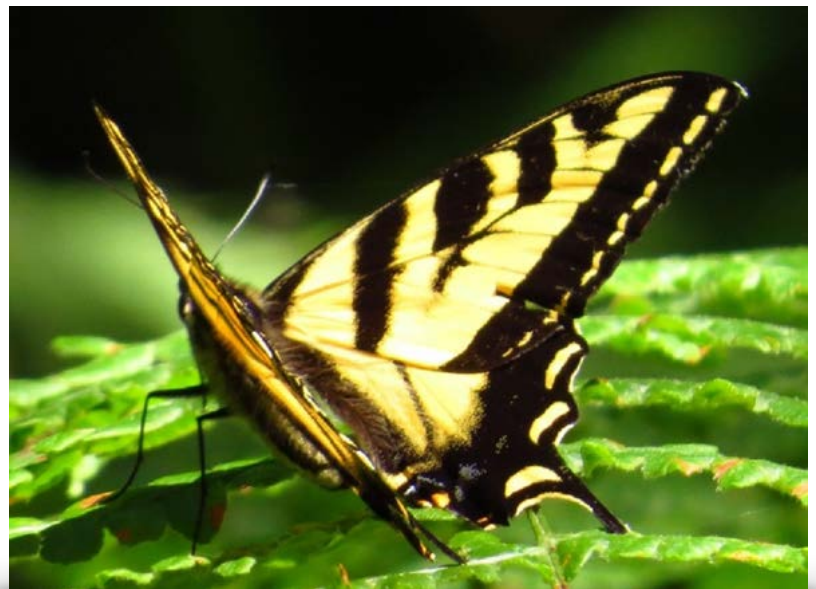
All those people who may want to plant milkweed here could do much better by adding plants that are native to their regions on Vancouver Island. Instead of being disappointed about not attracting monarchs to their milkweed, they would attract native bees and butterflies that urgently need every native plant they can find. Native plants such as Douglas aster and Canada goldenrod (in the forb category) will attract a lot of specialized bees that are in a severe downward spiral right now.

I have also found that many people think that any BC native plant is fine to plant in their gardens. However, plants native to a particular region are the basis for ecosystem services in that region. Especially in the context of adding appropriate native plants to their gardens, a very helpful tool for readers would be:

*E-Flora BC*: Electronic Atlas of the Flora of British Columbia

For example, they would just type in a Google search field: **milkweed bc eflora** (or the Latin name) which leads directly to the *E-Flora BC* site for this plant and shows the regional distribution, along with habitat requirements and more.

Through my own experience (and mistakes) I just know how helpful and indispensable this tool is for new and seasoned native gardeners.



## Nature's Best Hope by Dr Doug Tallamy

Sabine also recommended a couple of presentations from Dr. Douglas Tallamy, author of the *New York Times* bestselling book *Nature's Best Hope* (February 2020) and professor of entomology and wildlife ecology at the University of Delaware .

If the intros to both presentations seem a bit long, just skip to Tallamy's talk. Both presentations focus on the same general topic, but complement each other with additional information, especially if viewed in the order below.

Besides being highly relevant to all gardeners in today's world of huge insect and bird declines, Doug's talks are not only big eye-openers, but also funny, entertaining and inspiring. All gardeners should at least have access to his information, so that they can act on it if they are so inclined.

Sabine also recommends his book. It's a ground-breaking work that will hopefully become the basis for much-needed ecological stewardship, not only for individual gardeners and property owners, but also for municipalities, landscapers and other land managers. Tallamy's messages certainly were a revelation on many levels.

If you are interested in learning more about native planting and re-wilding projects in Duncan, Vancouver Island, please contact Sabine Almstrom.

<https://www.youtube.com/watch?v=KkSdBZI2qoM>

<https://www.youtube.com/watch?v=iDRGryX1uVI>

<https://www.ecobeneficial.com/videos/interview-dr-doug-tallamy/>

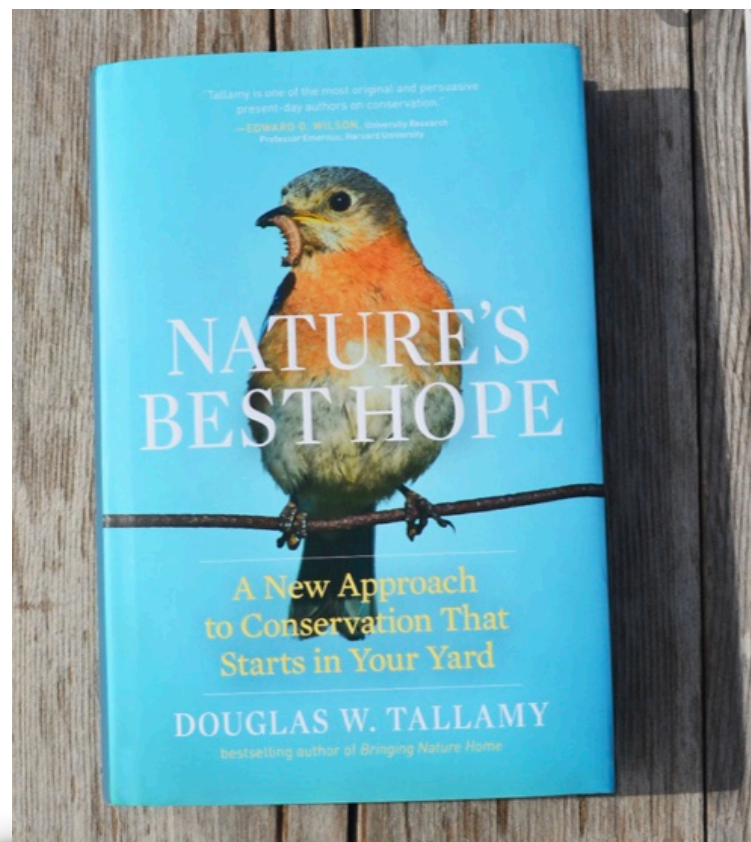
The third link is an interview with Doug Tallamy by Kim Eierman of ecobeneficial.com, done in Doug's garden in 2013. There is plenty of background information about restoring ecological function to our mostly ecologically impoverished gardens.

Ecobeneficial! - the website - is also a great resource for gardeners who want to help native bees, birds and ecosystems in their gardens, as is Kim's book *The Pollinator Victory Garden: Win the War on Pollinator Decline with Ecological Gardening*.

A blurb from the website:

"EcoBeneficial! is a horticulture communications and consulting company founded by Kim Eierman. The company was created to change the way in which we think about and manage our landscapes. "

"With natural areas rapidly diminishing, species declining at historic rates and climate change dealing new blows to environmental health, our managed landscapes have never been more important. Unfortunately, many of our traditional gardening and landscaping practices have contributed to unhealthy ecosystems. The American love affair with exotic turf lawns is just one example of how we have compromised the environment we depend upon."



# It All Started with Dismay Over My Bleached Front Lawn

By Susan Lilholt, Vancouver Master Gardeners

Each June, for the past three years, I've watched the lush spring green turn to white. I am surprised by our drought-filled summers since we moved to the coast. So, while I slowly came around to accepting this climate change as a new reality, I focused instead on the back garden as I toiled toward my retirement date. In between, I dreamed of the day when I would turn the front, south-facing landscape into a retirement oasis surrounded by living colour and fragrance - a place I would invite pollinators to dine and drink from the fountain while I listened to the sounds of nature and cultivated tranquillity. I saw myself growing a small veggie garden, adding to the weekly produce we bought from our local organic farmers. And I knew that somehow, my experiences from years spent in southern Europe would have to figure prominently.

Like so many Vancouverites I am a closet environmentalist and take seriously whatever efforts I can make to live more lightly on our planet. I registered our property on the coastal BC Pollinator Pathway the first year we arrived here. When I announced to Sho, our gardener, hired annually to trim our 15' tall hedge, that I was going to turn our front yard into a modern Mediterranean garden as my retirement project, he just looked at me: "Most people want to do less gardening work as they get older, not more." Over a few months, I chewed on Sho's challenge and by the time I invited Shan Bodie, our cousin in landscape design, to look at my sketches, I had painted a picture for her of a terraced upper garden with veggie boxes, crushed limestone pathways, low ledgestone walls, a quiet fountain and, most importantly, corten steel edging to provide clean lines.

I had amassed lists of plantings and photos from magazines, including drought-tolerant, Mediterranean, native and pollinator-friendly plants, along with those

that I just loved and would fit into my colour scheme of chartreuse, blues/lavenders, white, burgundy and small splashes of yellow. I knew that drought-tolerant and Mediterranean meant less work and this would become more important over the coming years. Besides, Sho's words were still ringing in my ears. I also knew that sticking to the recommended three to five colours in design would be a challenge.

Shan and I worked well together and she brought the necessary rigour of proper proportions and dimensions for the contractors while adding her own creativity and planting suggestions. She also simplified my design vision, bringing a stronger sense of the simplicity and tranquillity that I sought. I confess I have succumbed to more plantings than she would have liked and revised a few along the way.

We were lucky to find Marc Holley of Second Generation Landscaping, whose engineering experience meant he could fix our drainage problem on the sloped front yard, grade it right for the terrace and calculate the right amount of aggregate and new topsoil, including the organic soil for the raised veggie bed, to complete all the hardscaping.

With these two experts we avoided a lot of potential errors and we know from earlier home renovations that it is always worth waiting for the people you want because the best ones are always busy. We got in line, which meant that shovels in the ground didn't happen until July. My plans for spring planting evaporated with the heat.

If you're thinking of amending your own garden to create less work or you're dreaming about creating a Mediterranean garden with drought-tolerant plantings, read on for the full story and photos here <http://www.mgabc.org/node/278>



# Keeping Members Connected

## White Rock and District Garden Club

By Mary Openshaw, Past President



Our daytime club has been meeting for 74 years since 1947. One of the highlights during past years has been our Show Bench where members enter exhibits in novice and advanced categories of judged parlour shows, themed shows and mall shows to win trophies and ribbons.

Covid has presented a challenge and to keep our hand in, we developed a non-judged virtual show where photos of exhibits could be entered. Participation has been about the same and the exhibits have then been shown on the gallery of our website, [whiterockgardenclub.ca](http://whiterockgardenclub.ca) as well as on Instagram, Twitter and Facebook.

It's definitely a pleasure to revisit the exhibits for an uplift or for inspiration in creating a design for the home.

As well, we've made little videos of putting together a Christmas porch pot, a wreath and a simple greenery centrepiece - videos that are available to visit on Facebook and revisit in future years.

Our gardening world has definitely altered as we Zoom to stay connected for meetings and show off our creations via social media platforms.



Exhibit by Mary Openshaw.



Exhibit by Bev Sass.

## Congratulations Penny Lyle, Sechelt Garden Club

Congratulation to Sechelt Garden Club member Penny Lyle for her nomination for the Unsung Champions Award for her outstanding contribution to the community through gardening beautification projects. From the award letter sent by Patrick Weiler, MP for West Vancouver-Sunshine Coast, which was shared with the BCCGC by the Club: “You have been nominated as part of our office’s Unsung Champion Awards program that recognizes outstanding contributions and service to the community.” The Sechelt club added: “We at the Sechelt Garden Club were delighted to learn that our long-time member Penny Lyle has been nominated for her outstanding contribution to the community through gardening beautification projects.”



Christi Blackman and Penny Lyle received more than 700 rockery plants from local nurseries and community members for Lyle’s project to beautify the wall outside the Sechelt public pool. Jacob Roberts photo  
Source: *Coast Reporter*



## A SCHOLARSHIP TO SUPPORT GARDENING OVER THE GENERATIONS

2020 was a year of challenges and changes for students with distance learning becoming the new reality. One thing that didn't change is support for students from the BCCGC. Sara Tanaka, one of our scholarship recipients from Kwantlen Polytechnic University, shares her story about how an early passion for gardening with her father is growing into a vision for designing edible and native gardens.



Dear Scholarship Committee,

Thank you so much for honouring me with the BCCGC award. I was so surprised to receive it, and it brought me to tears.

Growing up as a Japanese-Canadian citizen, gardening runs through my family. My great-uncle taught my dad and my dad taught me. I grew up in Burnaby helping my dad rake leaves and pick up pinecones off the lawn when I was a young child. I always knew I wanted to do something good for the environment but wasn't sure what exactly that meant.

After high school, I helped my dad at the landscaping company where he works. It was a great opportunity and gave me the valuable experience needed in the field. At the same time, I went to BCIT and earned my diploma in Natural Resource Management. The career prospects weren't what I hoped for and realized horticulture would be a better fit for me. I started part-time studies at Kwantlen Polytechnic University three years ago in their general horticulture program and have been thoroughly enjoying the courses.

Once I finish my horticulture diploma, I would like to incorporate my previous education from BCIT and start my own landscaping company, specializing in design for edible and native gardens. I know a lot of people aren't the biggest fans of native gardens because they aren't always the prettiest and can be high maintenance but done right, they can be beautiful and beneficial to the environment by helping increase biodiversity in urban landscapes.

Again, I can't thank the BC Council of Garden Clubs enough for honouring me with your reward. It was one of the best things that happened to me during this difficult year. This scholarship has helped me and will continue helping me further my education to create a more sustainable future.

Take care,  
Sara

## NEWSLETTER CONTRIBUTIONS

We would love to feature your club in the newsletter. You are invited to submit an article at any time (please include photos). Photos should be high resolution and you should include the name of the photographer if possible. Articles should be in the range of 300–500 words. If you have an idea for a longer piece, connect with the newsletter editor in advance to discuss your idea.

Articles are due on the 15th of the month preceding publication. If they are submitted after that date, they will be held for the next issue. The next due date is February 15th for March 1st. Submissions/inquiries: [newsletter@bcgardenclubs.com](mailto:newsletter@bcgardenclubs.com).

Lynda Pasacreta, Editor  
Pam Robertson, Copy Editor

## BRITISH COLUMBIA COUNCIL OF GARDEN CLUBS

Eric Hees | President

Lorna Fraser | Past President

Cindy Tataryn | First Vice-President

Second Vice-President | **vacant**

Pam Robertson | Secretary

Ginette Handfield | Treasurer

Brenda Woosnam | Scholarship Trust Fund

Communications Coordinator | **vacant**

Lorna Herchenson | Membership Committee

Lynda Pasacreta | Newsletter Committee

[BCgardensclubs.com](http://BCgardensclubs.com) | [www.facebook.com/bcgardenclubs](http://www.facebook.com/bcgardenclubs)

BC Council of Garden Clubs, PO Box 16106 Lynn Valley, North Vancouver, BC V7J 3S9

Year – 2021

## **BC Council of Garden Clubs 2021 Affiliation Fees and Liability Insurance Enrollment**

### **Council Membership Fees:**

Membership is for the period January 1 to December 31.

Annual membership fee is \$37.00 and covers the period of January 1st to December 31st.

To be eligible to vote at B.C. Council of Garden Club's AGM, membership must be paid.

### **Liability Insurance:**

Coverage is for the period March 1st to March 1st. The rates in effect as of March 2021 are in the attached form. To qualify for this liability insurance, the group must be a member of the BC Council of Garden Clubs. Insurance Protection (\$3 million liability, or \$5 million liability with additional coverage) extends to the operation of garden clubs/allotment gardens/community gardens, the hosting of meetings, field trips, two flower shows per club per year and two plant sales per year. A Certificate of Insurance (COI) outlining the details can be requested by covered members. This insurance Policy provides no coverage for any claim in any way caused by, arising out of or resulting from any virus, bacteria, disease or contagion.

### **Coverage for allotment and/or community gardens:**

The insurer, after reviewing the coverage offered, has determined that due to the higher risk involved in allotment and community garden operations, a rate scale for these groups was appropriate. Gardens up to 15 acres are eligible for coverage of liability insurance through BC Council of Garden Clubs, however, gardens over 15 acres would require separate individual coverage. Those gardens should contact the insurer directly and provide the insurer with the additional information required for a quote. For additional information, see Contact below.

### **COVID-19:**

Please note that the Province of British Columbia put in place BC Reg204/2020 (Limits on Actions and Proceedings) to provide comfort and protection from civil liability to persons engaging in activities that are important to BC's response to, and recovery from, the COVID-19 pandemic. Such activities include non-profit services with a community benefit. The Regulation applies to damages resulting, directly or indirectly, from an individual being or likely being infected with or exposed to SARS-CoV-2, which is the virus that causes COVID- 19. You can find more information at: <https://www.lawsociety.bc.ca/Website/media/Shared/docs/about/covid/CivilLiability.pdf>. The Regulation can be found at: Regulation 204 2020

### **Enrollment:**

To renew membership and insurance, please complete the Member Affiliation Information Form and Remittance for Affiliation and Insurance Form and mail forms together with remittance to BC Council of Garden Clubs, P.O. Box 16106 Lynn Valley, North Vancouver, B.C. V7J 3S9

### **Contact:**

If you have any questions or require a certificate of coverage, please contact Lorna Herchenson, Membership Chair at 604-929-5382 or [lherchenson@telus.net](mailto:lherchenson@telus.net).

Year – 2021

## B.C. Council of Garden Clubs Membership Affiliation Information

PLEASE PRINT CLEARLY

### ORGANIZATION:

1. Name: \_\_\_\_\_

2. Website: \_\_\_\_\_

3. Organization E-mail: \_\_\_\_\_

4. Meeting location (city): \_\_\_\_\_

5. Speciality Interest (if applicable): \_\_\_\_\_

6. We agree to have the information provided above about our organization included in the Member Directory published on the Council's website at:

[www.bcgardenclubs.com/membership/member-directory/](http://www.bcgardenclubs.com/membership/member-directory/) Yes/No: \_\_\_\_\_

**LIAISON:** A Liaison is needed for communications between the Council and your organization. The Liaison e-mail will receive newsletters and e-bulletins for distribution within your organization, as well as receive renewal notifications. It is recommended that this Liaison be named and a phone number provided should we need to reach your organization for clarification on your membership, insurance selection or Scholarship donation (if applicable), or if there are issues with e-mail communications.

7. Liaison E-mail: \_\_\_\_\_

8. Liaison name: \_\_\_\_\_

9. Liaison phone: \_\_\_\_\_

**ADDITIONAL CONTACT:** Your organization can identify an additional contact name and phone number

for use by BCCGC in case we cannot reach the Liaison named above.

10. Additional contact name: \_\_\_\_\_

11. Additional contact phone: \_\_\_\_\_

Please notify BCCGC of any changes via: Lorna Herchenson (Membership):

E-mail: lherchenson@telus.net \_\_\_\_\_ Phone: \_\_\_\_ 604-929-5382 \_\_\_\_\_

Year 2021

**B.C. Council of Garden Clubs  
Remittance for Affiliation and Insurance (2021)**

**PLEASE PRINT CLEARLY**

Name of Organization: \_\_\_\_\_

Enclosed is our cheque, payable to BC Council of Garden Clubs for the following:

**AFFILIATION FEES:** \$ 37.00

**INSURANCE:** ( for details, please consult [www.bcgardenclubs.com/membership/insurance-info/](http://www.bcgardenclubs.com/membership/insurance-info/) )

**Basic Liability Insurance** (per member) # of members: \_\_\_\_\_ x \$1.12 = \$ \_\_\_\_\_

**Extra Liability Insurance** (per member) # of members: \_\_\_\_\_ x \$0.56= \$ \_\_\_\_\_

**ONLY For Allotment/Community Gardens (In addition to the per member cost above)**

- Up to 2,500sq.ft..... \$ 56.... \$ \_\_\_\_\_
- From2,501sq.ft.to5,000sq.ft..... \$ 85.... \$ \_\_\_\_\_
- From5,001sq.ft.to10,000sq.ft..... \$112.... \$ \_\_\_\_\_
- From10,001sq.ft.to20,000sq.ft..... \$168 ... \$ \_\_\_\_\_
- From20,001sq.ft.to1acre..... \$280.... \$ \_\_\_\_\_
- From1acreto3acres..... \$560.... \$ \_\_\_\_\_
- From3acresto6acres..... \$840.... \$ \_\_\_\_\_
- From6acresto15acres..... \$1,122.... \$ \_\_\_\_\_

**Total Insurance:** ..... \$ \_\_\_\_\_

**TOTAL REMITTANCE:** \$ \_\_\_\_\_

Submitted by: \_\_\_\_\_ Phone: \_\_\_\_\_

Receipt: (Receipts are sent via e-mails) E-mail address: \_\_\_\_\_

**Please return completed:**

1. Membership Affiliation Form
2. Remittance Form
3. Cheque payable to "BC Council of Garden Clubs"

**Mail to:**

Treasurer, BC Council of Garden Clubs  
P.O. Box 16106 Lynn Valley, North Vancouver, B.C. V7J 3S9

**Administration Use Only**

Rec'd date \_\_\_\_\_ Cheque # \_\_\_\_\_ Receipt # \_\_\_\_\_ ML \_\_\_\_\_ DB \_\_\_\_\_ IL \_\_\_\_\_